

Riverwalk



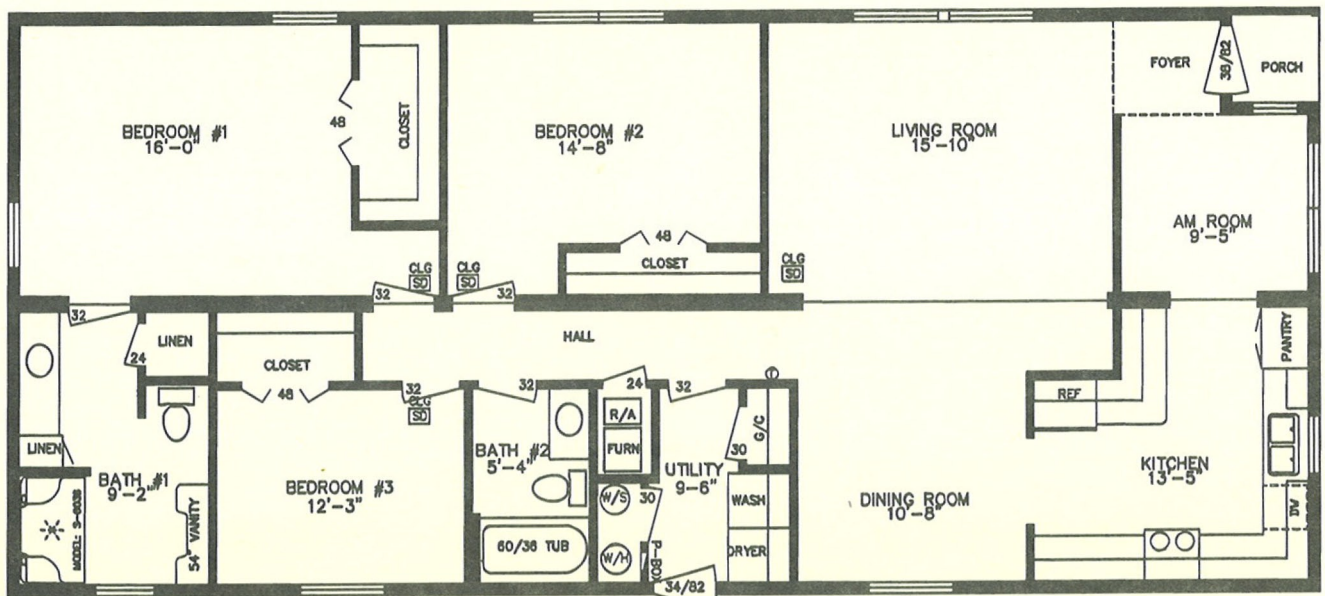
DORA LANE • PLYMOUTH, IN 46563

PHONE: (574) 936-2535

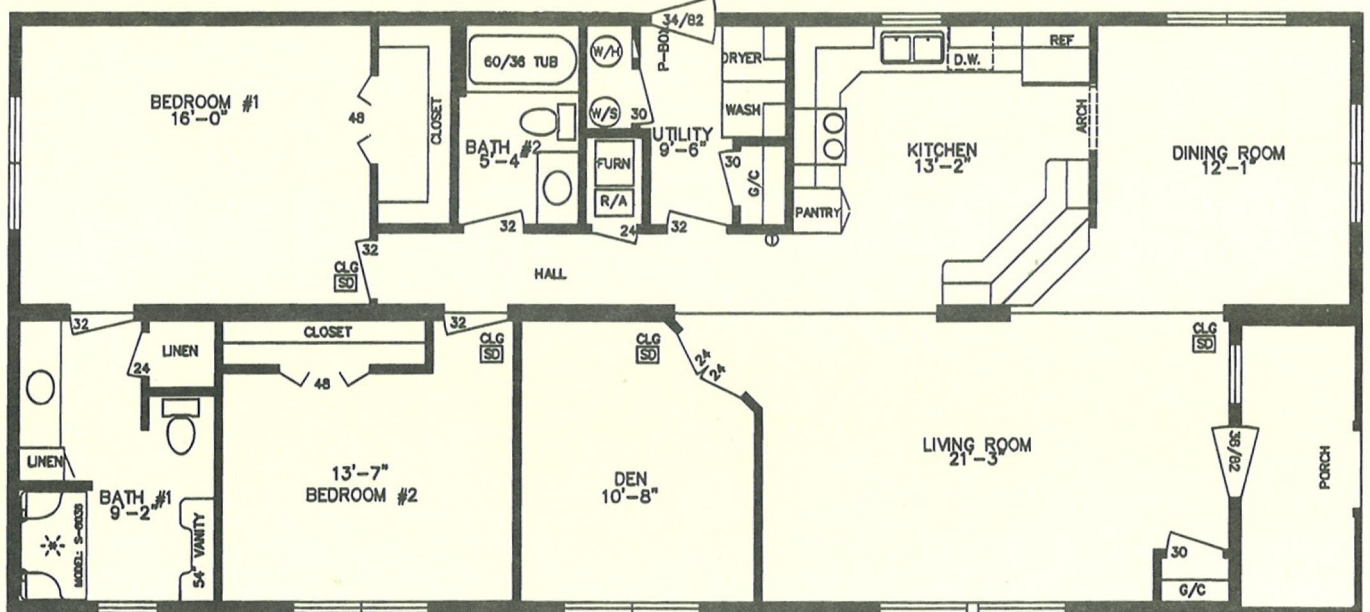
Featuring:



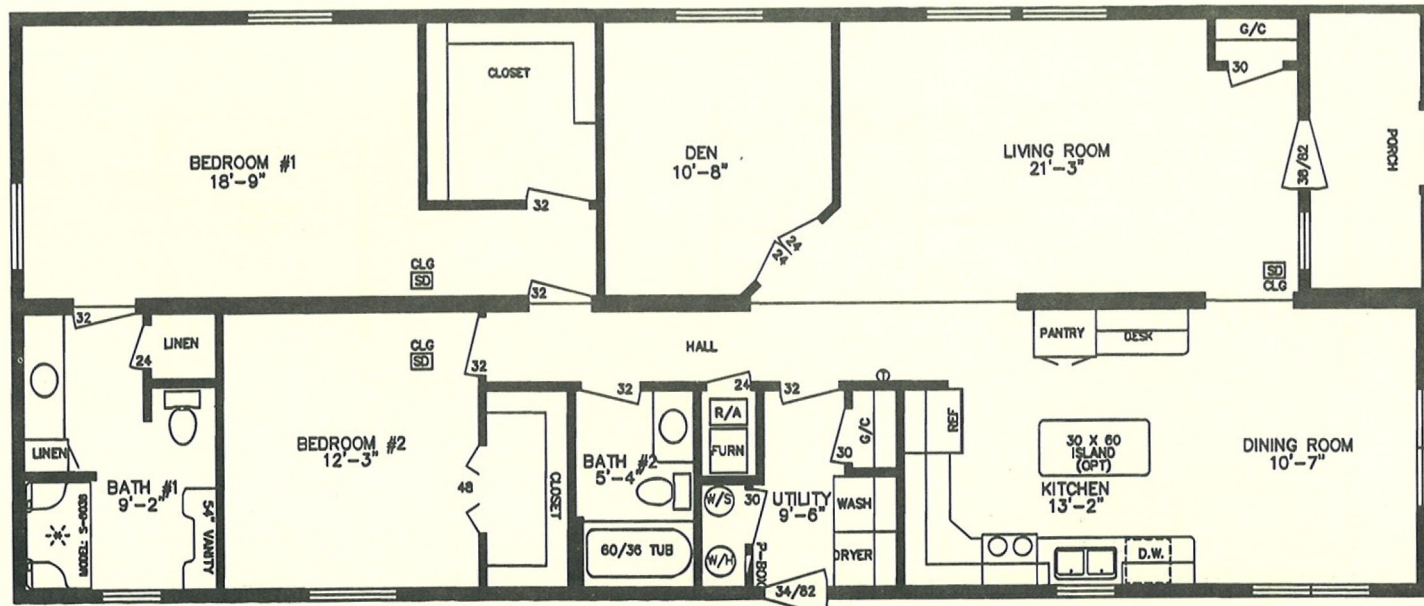
Customized Quality Since 1969



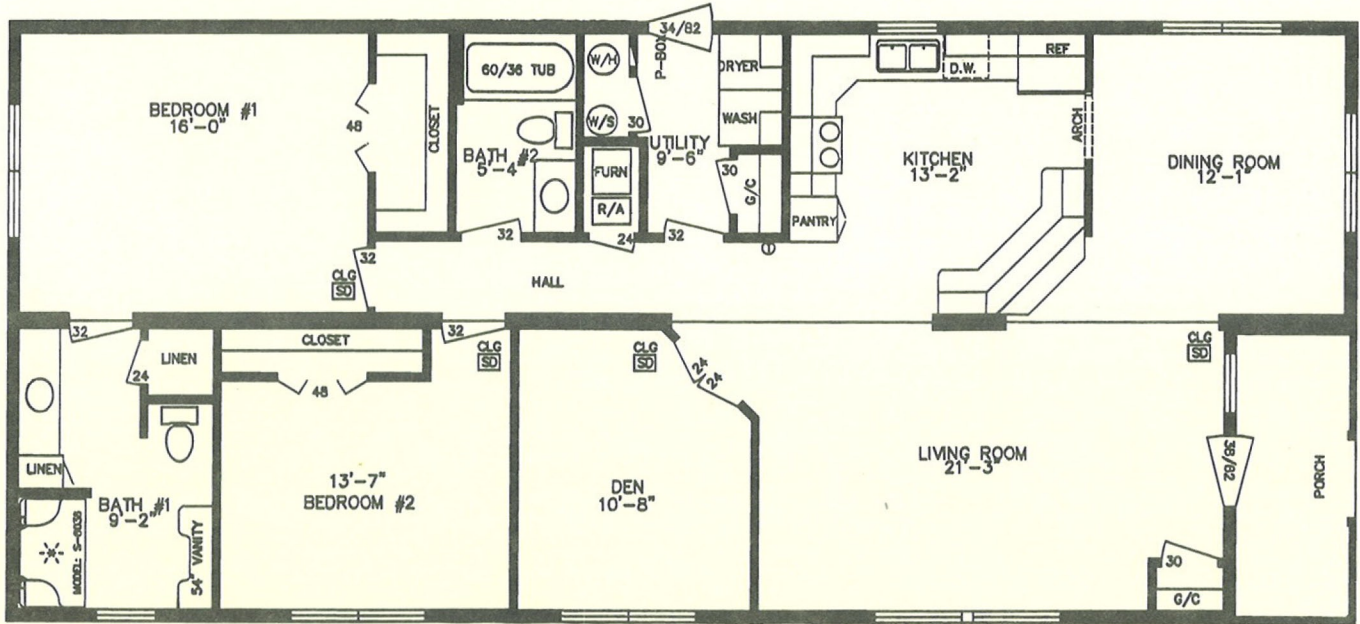
RIVER WALK-1 28 X 64 (1600 sq ft) Floor Size: 26'-8" X 60'-0"



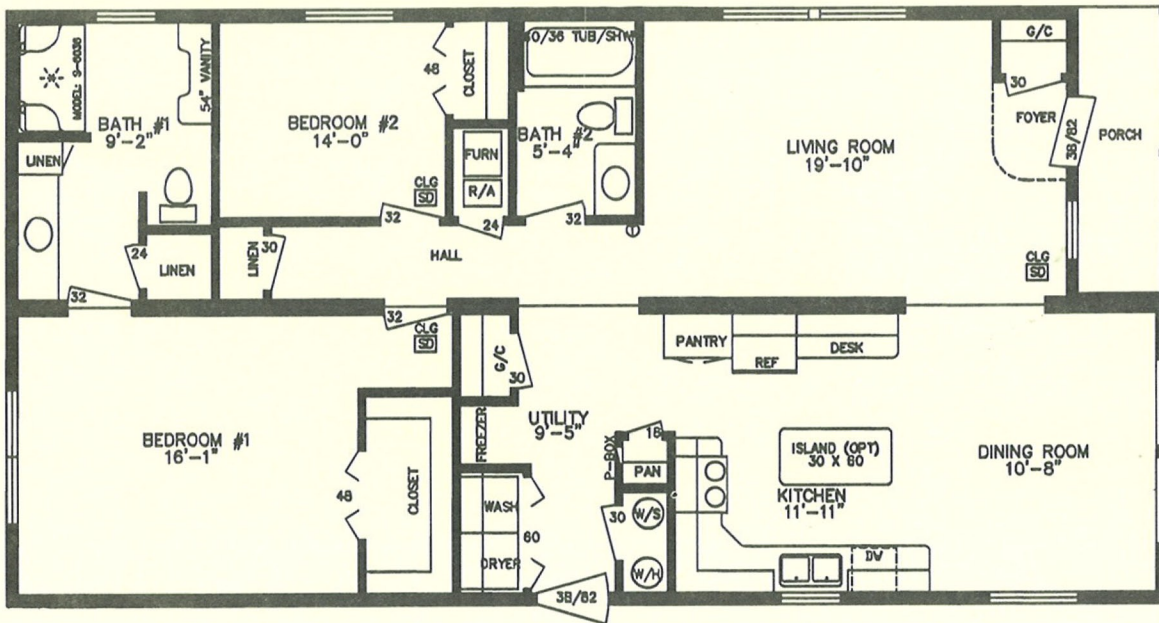
RIVER WALK-2 28 X 64 (1600 sq ft) Floor Size: 26'-8" X 60'-0"



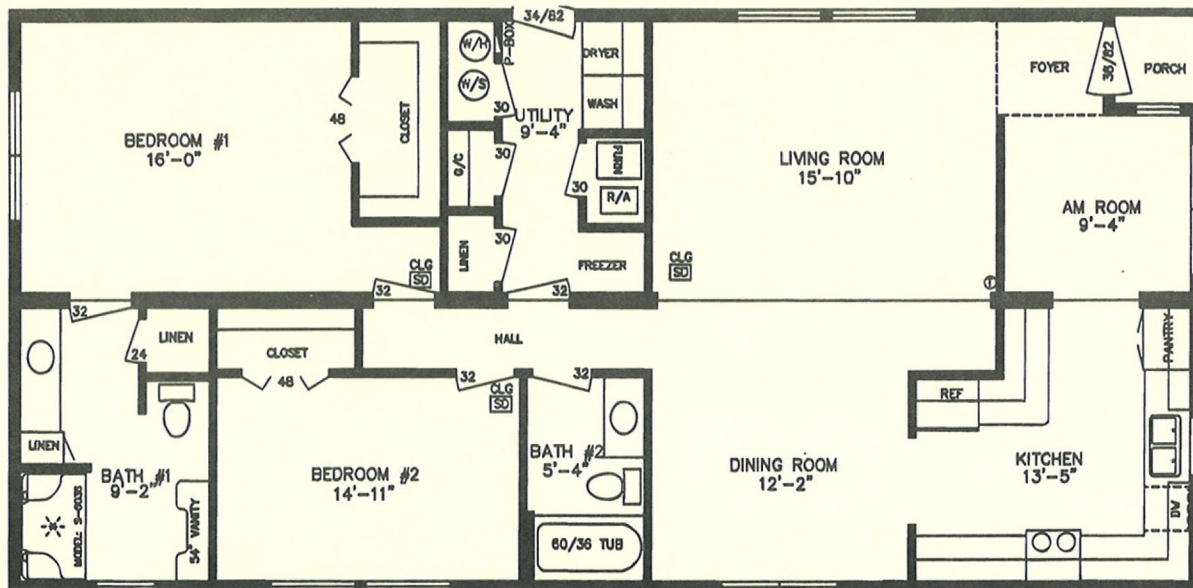
RIVER WALK-3 28 X 68 (1706 sq ft) Floor Size: 26'-8" X 64'-0"



RIVER WALK-2 28 X 64 (1600 sq ft) Floor Size: 26'-8" X 60'-0"



RIVER WALK-5 28 X 56 (1386 sq ft) Floor Size: 26'-8" X 52'-0"



RIVER WALK-6 28 X 59 (1458 sq ft) Floor Size: 26'-8" X 54'-8"

RIVER WALK STANDARD FEATURES

INTERIOR

Smooth Finished Drywall Throughout
w/Moisture Resistant Drywall in Baths
Closets are Textured Drywall
8'0" Sidewalls
Ceiling Corners Finished w/No Molding T/O
Cathedral Ceiling in Living Areas
Corian Window Sills Throughout
39 oz. Carpet Installed w/Tack Strip & 5 LB. Rebond Pad
Perimeter Wall Mounted Heat Registers
Stained Base Shoe Molding Throughout
Stained Door Casing At All Interior Doors
Deluxe Vinyl Foyers At All Entry Doors
Stipple 1/2" Drywall Ceiling Throughout
Upgrade Light Package
6-Panel Interior Doors 32" Passage

INSULATION

R-19 Floor
R-19 Walls
R-30 Roof
Insulated Sill Plates

CONSTRUCTION

2" x 6" Floor Joists 16" O.C.
2" x 6" Sidewall Studs 16" O.C.
Prefabricated Roof Trusses 24" O.C.
3/4" O.S.B. Tongue & Groove Floor Decking
Basement Type I-Beam (Recessed Frame)
1/2" O.S.B. Around Entire House
1/2" O.S.B. Roof Sheathing
6" Top & Bottom Plates
Recessed Toe Kicks at Kitchen & Bath Base Cabinets
Heat Registers Installed in Toe Kicks in Kitchen
Hand Nailed Vinyl Siding
Double Layered 15 lb. Felt w/Nailed Shingles
Residential Aluminum Drip Edge & Fascia
Vinyl Soffit
Upgrade HUD Ventilation System
Hand Crafted Quality
Owens Corning Architectural Shingles
Ice and Water Shield

KITCHEN

Raised Panel Cathedral Cabinet Doors
Solid Oak Cabinet Stiles & Drawer Fronts
Hidden Cabinet Hinges
Wood Drawers w/Steel Roller System
Pull Out Shelves In Pantry Cabinets
25" Residential Depth Countertops & Base Cabinets
Residential Depth Stainless Steel Sink
Single Lever Kitchen Faucet
Kitchen Sink Sprayer
Backsplash At Counter w/Self Edged Countertops
Light Over Kitchen Sink w/Separate Switch
2 - 48" Fluorescent Ceiling Lights
Deluxe Vinyl No-Wax Floor Covering

APPLIANCES

GE 18' Frost Free Refrigerator
GE Deluxe Free Standing Gas Range
30" Lighted Power Range Hood
40 Gallon Electric Water Heater
High Efficiency InterTherm Gas Furnace

UTILITIES

Ducted Cold Air Return System
Fiberglass Insulated Heat Ducts
Copper Wiring w/100 AMP Service
Ground Fault Circuits In Kitchen & Baths
Class "A" Drywall Lined Furnace & W/H Compartments
Sprinkler System In Furnace & W/H Compartments
Smoke Detectors
Plumb For Washer & Wire 220 For Dryer
Cabinet Over Laundry Cabinet
All Water Fittings Above The Floor
Precision Drilled Plumbing Holes
Brass Water Shut Offs On All Water Lines

BATHS

60" 1 Piece Fiberglass Tub/Shower Combination
Curtain w/Sheer At Fiberglass Tub
Bath Exhaust Vent
China Lavs w/Pop Up Drain & Overflow
Delta Single Lever Faucet at Sinks, Tubs and Showers
Tri-Door Medicine Cabinet w/Light Bar - Master Bath
Solid Oak Stiles w/Oak Cabinet Doors
Backsplash At Lav Counter w/Self Edged Countertops
China Stool & Tank

BEDROOMS

Ceiling Light w/Switch
Switched Ceiling Light In All Walk In Closets
Vented Wire Shelving
Egress Window
Closets are Textured Drywall

EXTERIOR

7/8" Low "E" Vinyl Thermopane Windows w/Screens
Insulated Steel Doors Front & Rear w/Storms
36" x 80" Front Entry Door
Deadbolt Locks On All Exterior Doors
Raised Panel Shutters All Windows
Electric Doorbell At Front & Rear Doors
Exterior Electric Receptacle
White Porch Light At Each Door
Frost Free Spigot
Ridge Vent Ventilation System
11" Side And End Overhangs
Nominal 5 x 12 Roof Pitch

OPTIONAL ITEMS SHOWN

Bifold Closet Doors
54" Bath Vanity, Kitchen Desk
Water Softner Hook-up

RIVER WALK • DORA LANE • PLYMOUTH, IN 46563 • (574) 936-2535

Shamrock Homes Has A Firm Commitment To The Consumer To Constantly Research And Develop Better Ways To Build Our Homes.
Because Of That Commitment, All Specifications Are Subject To Change Without Notice.